

TECHNICAL FILE:

Speaker 2"



1.- Technical specifications

Power: 2W

Impedance: 16 Ω

Flush mounting in universal box according EN-60-670 standard

Dimensions : 71X71X36

Any plate combination can be produced combining switches, sockets, dimmers,...

Any plate size according to your requirements.

Height dimensions (size in mm)

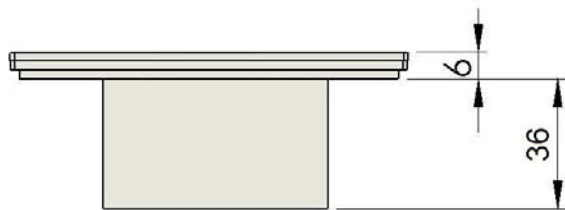


Plate dimensions (size in mm)

